

GRAMERCY SQUARE

A PARCEL OF LAND LYING WITHIN THE SOUTHEAST QUARTER (S.E. 1 /4) OF SECTION 14, TOWNSHIP 46 SOUTH, RANGE 42 EAST AND LYING WITHIN THE NORTHEAST QUARTER (N.E. 1 /4) OF SECTION 23, TOWNSHIP 46 SOUTH, RANGE 42 EAST, ALSO BEING A REPLAT OF ALL OF MIL-ATLANTIC AS RECORDED IN PLAT BOOK 95, PAGES 167 THROUGH 169 OF THE PUBLIC RECORDS OF PALM BEACH COUNTY, FLORIDA, AND LYING WITHIN THE CITY OF DELRAY BEACH, PALM BEACH COUNTY, FLORIDA

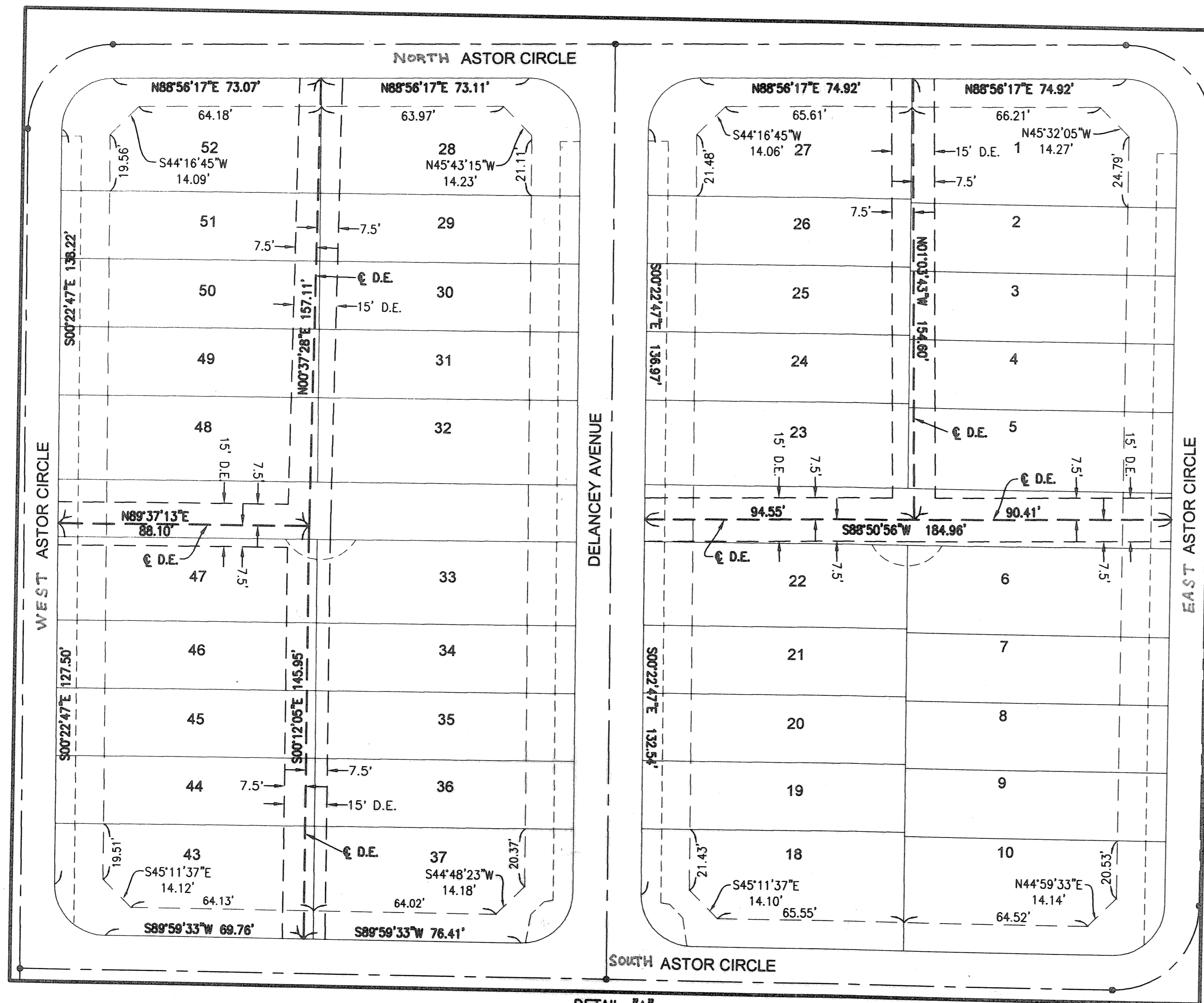
SHEET 5 OF 5

SEPTEMBER, 2005

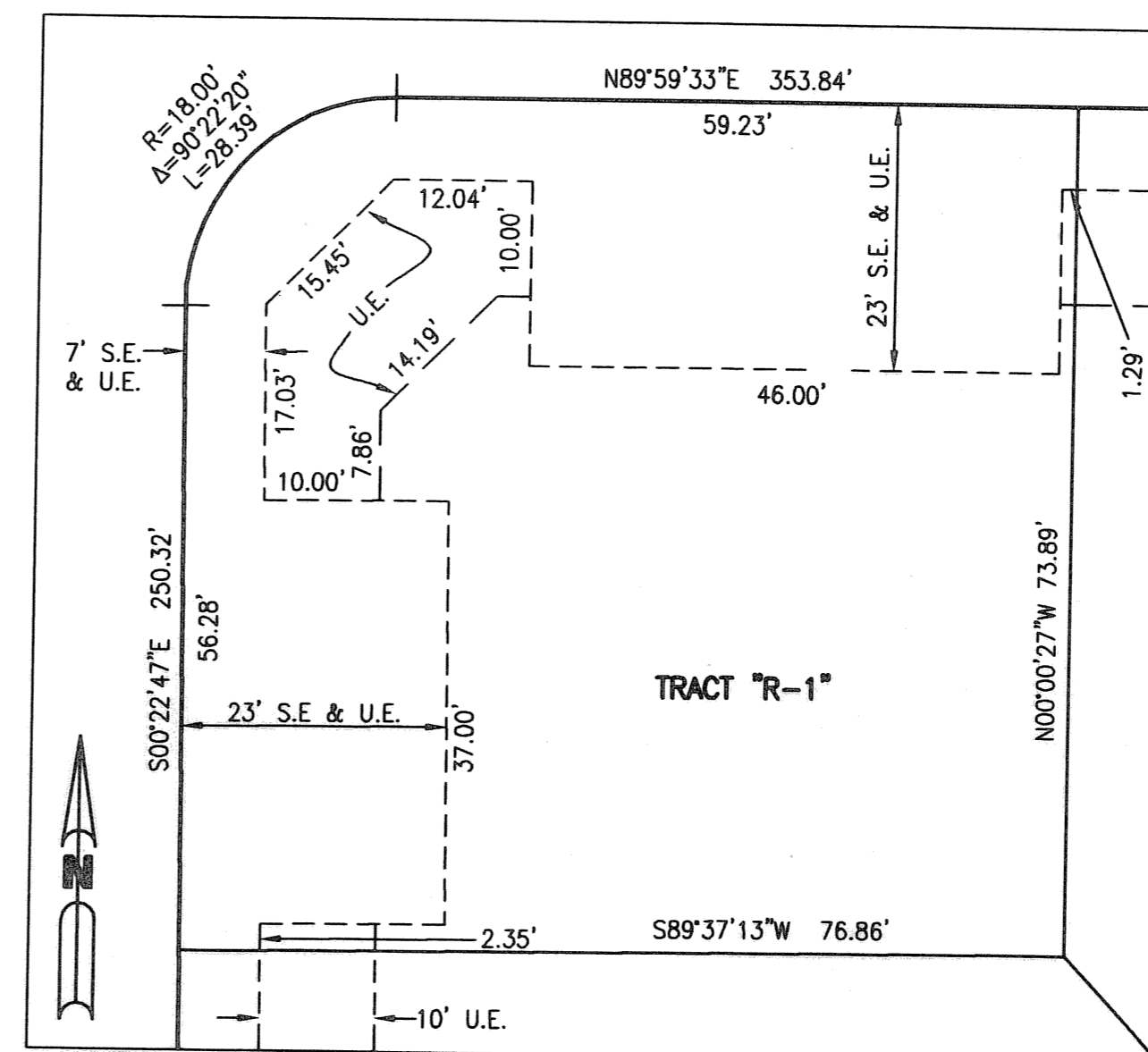
9

- LEGEND:**
- = SET PERMANENT REFERENCE MONUMENT, L.B. #6674
 - = FOUND PERMANENT REFERENCE MONUMENT, L.B. #353
 - = SET PERMANENT CONTROL POINT, L.B. #6674
 - B.E. = BUFFER EASEMENT
 - B.S.T.E. = BELLSOUTH TELECOMMUNICATIONS EASEMENT
 - ⊕ = CENTERLINE
 - D.E. = DRAINAGE EASEMENT
 - FND. = FOUND
 - F.P.L. = FLORIDA POWER & LIGHT COMPANY
 - L = ARC LENGTH
 - L.M.E. = LAKE MAINTENANCE EASEMENT
 - L.S.E. = LIFT STATION EASEMENT
 - N.T.S. = NOT TO SCALE
 - O.R.B. = OFFICIAL RECORD BOOK
 - P.O.B. = POINT OF BEGINNING
 - (P) = PLAT
 - P.B. = PLAT BOOK
 - PG. = PAGE
 - P.R.M. = PERMANENT REFERENCE MONUMENT
 - R/W = RIGHT-OF-WAY
 - R = RADIUS
 - SEC. = SECTION
 - S.L.E. = SEWER LINE EASEMENT
 - S.E. = SIDEWALK EASEMENT
 - U.E. = GENERAL UTILITY EASEMENT
 - W.L.E. = WATER LINE EASEMENT
 - Δ = DELTA ANGLE
 - = NON-VEHICULAR ACCESS LINE PER PLAT

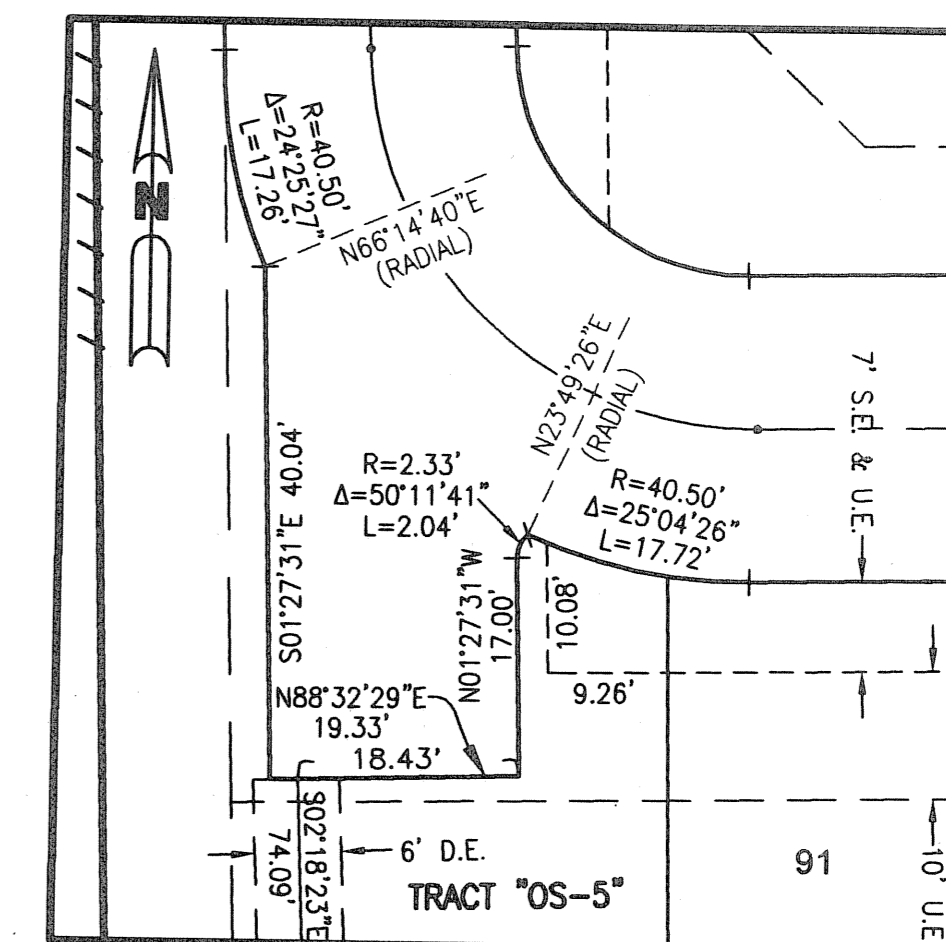
THIS INSTRUMENT PREPARED BY
 WILBUR F. DIVINE, P.S.M. 4190, STATE OF FLORIDA
 LAWSON, NOBLE AND WEBB, INC.
 ENGINEERS PLANNERS SURVEYORS
 420 COLUMBIA DRIVE, SUITE 110
 WEST PALM BEACH, FLORIDA 33409
 LB6674



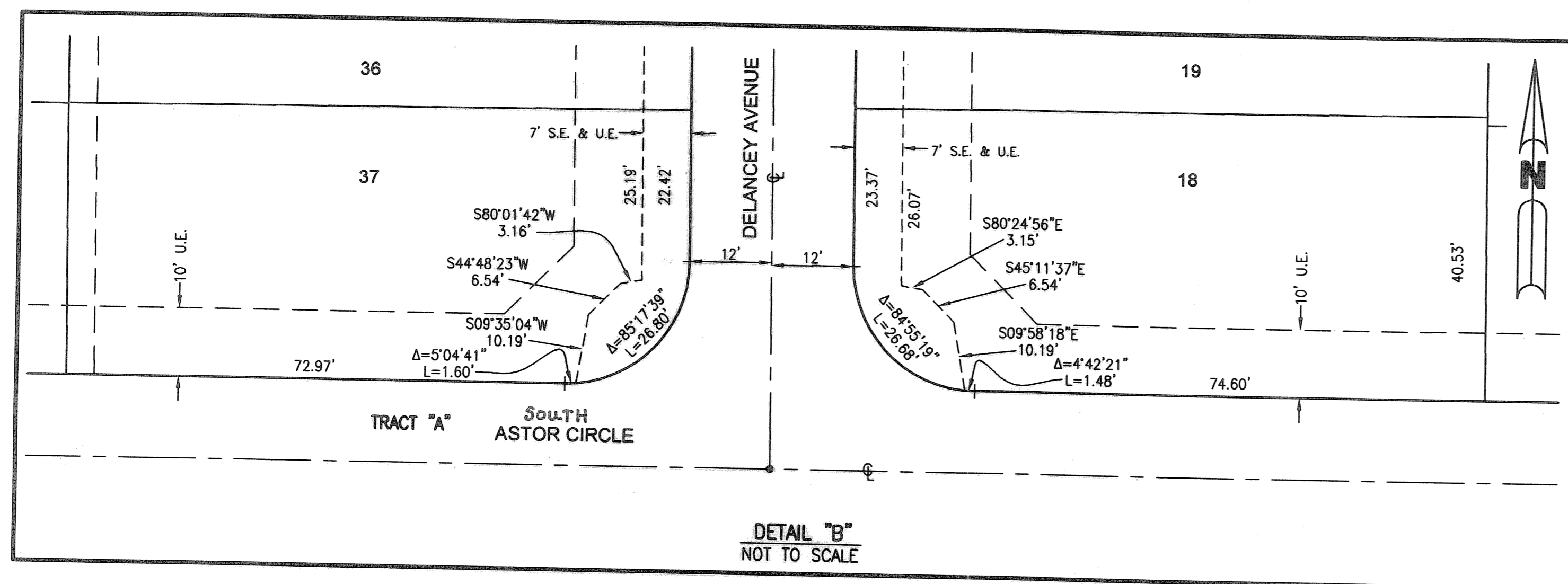
DETAIL "A"
 NOT TO SCALE



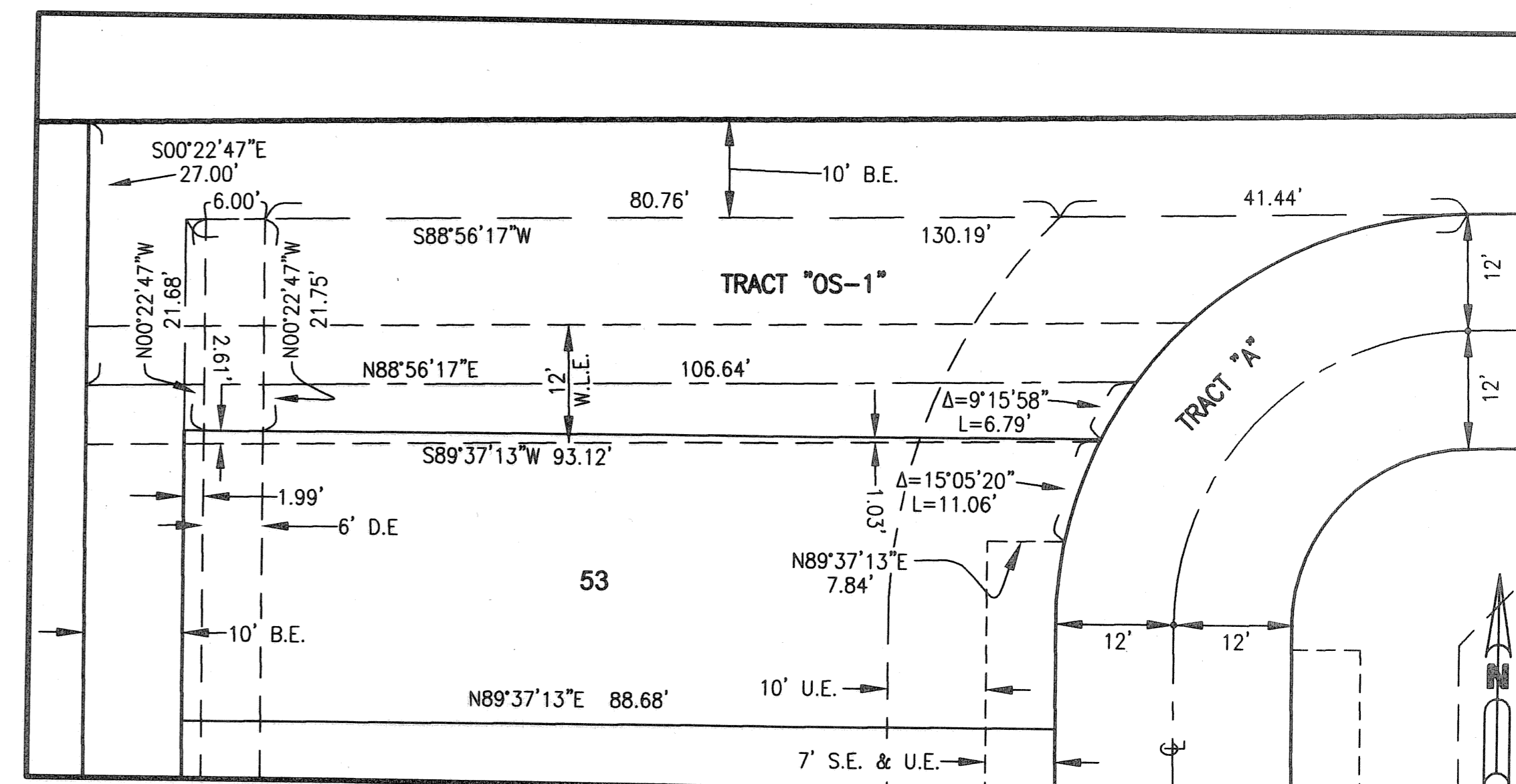
DETAIL "C"
 NOT TO SCALE



DETAIL "E"
 NOT TO SCALE



DETAIL "B"
 NOT TO SCALE



DETAIL "D"
 NOT TO SCALE